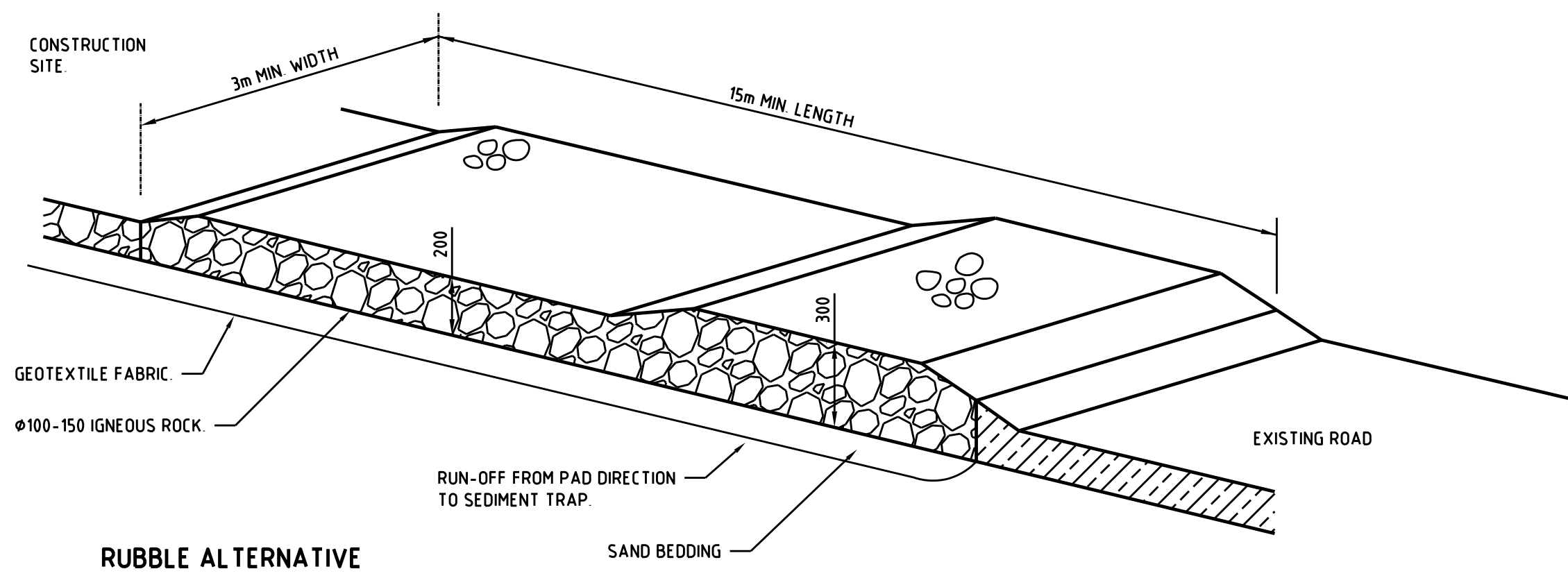


DIAGRAMMATIC VIEW

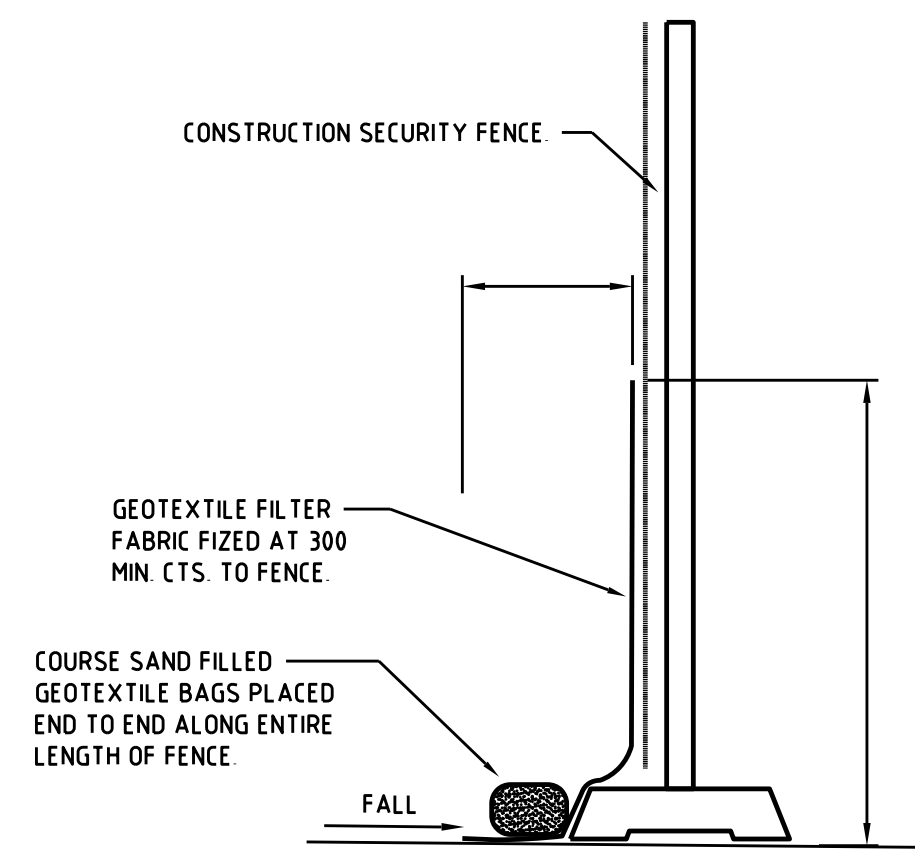
### SEDIMENT FENCE DETAIL

NOT TO SCALE

TYPICAL SECTION

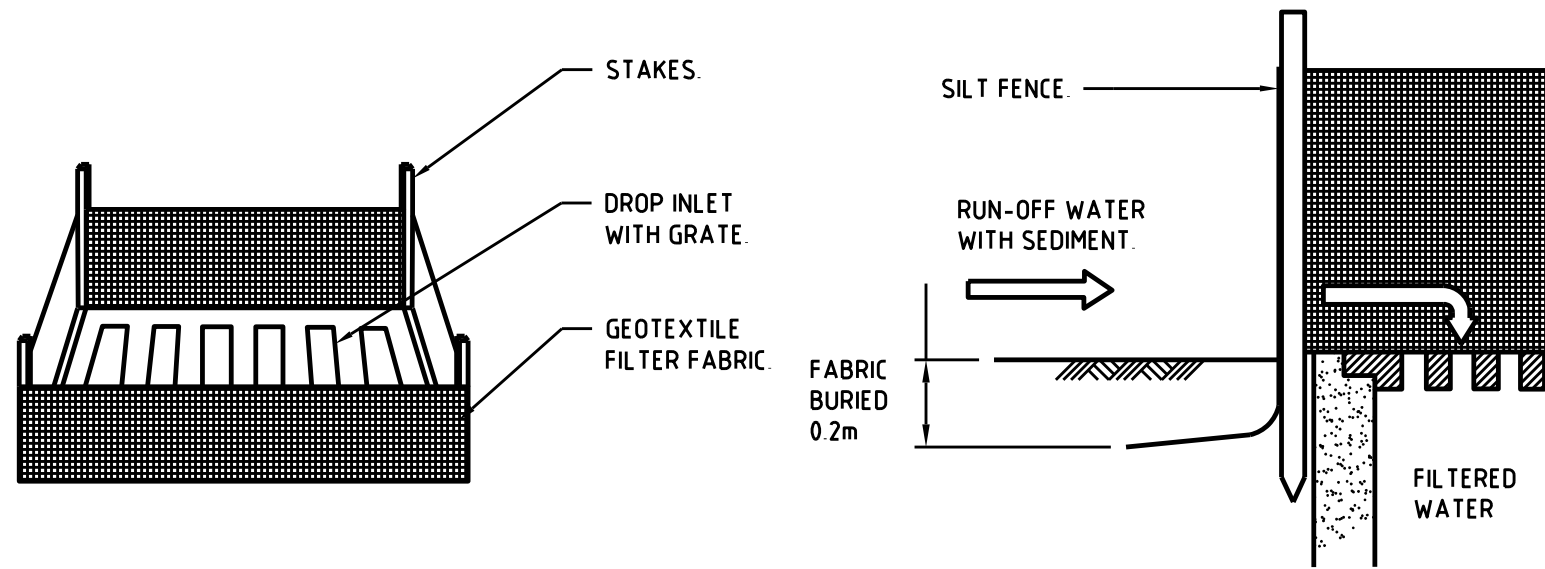


RUBBLE ALTERNATIVE



### SEDIMENT FENCE ON PAVED SURFACE

NOT TO SCALE

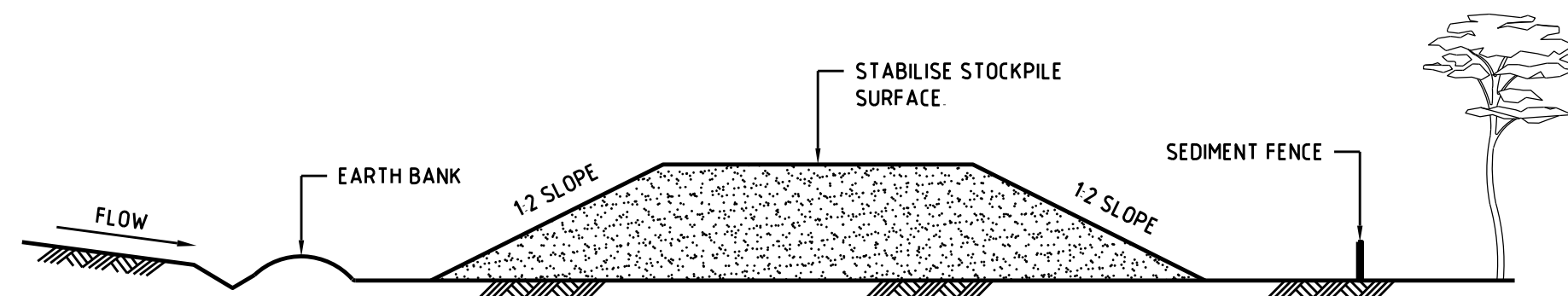


### SUMP SEDIMENT TRAP DETAIL

NOT TO SCALE

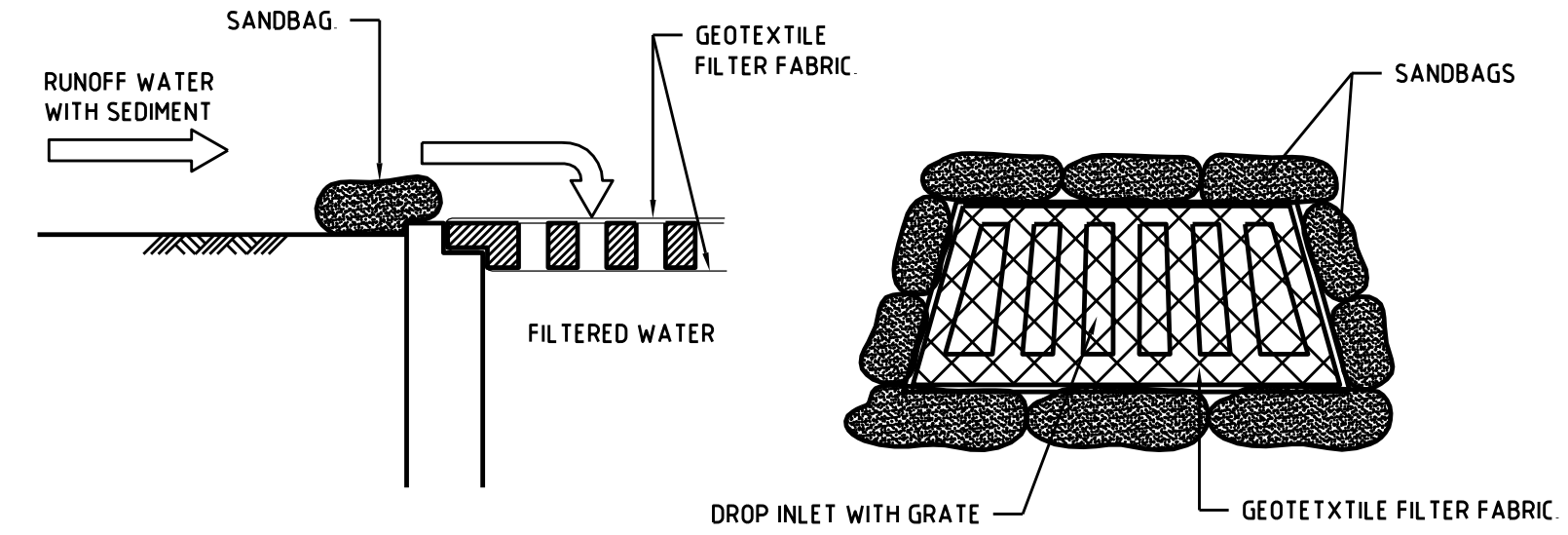
### TEMPORARY CONSTRUCTION EXIT

NOT TO SCALE



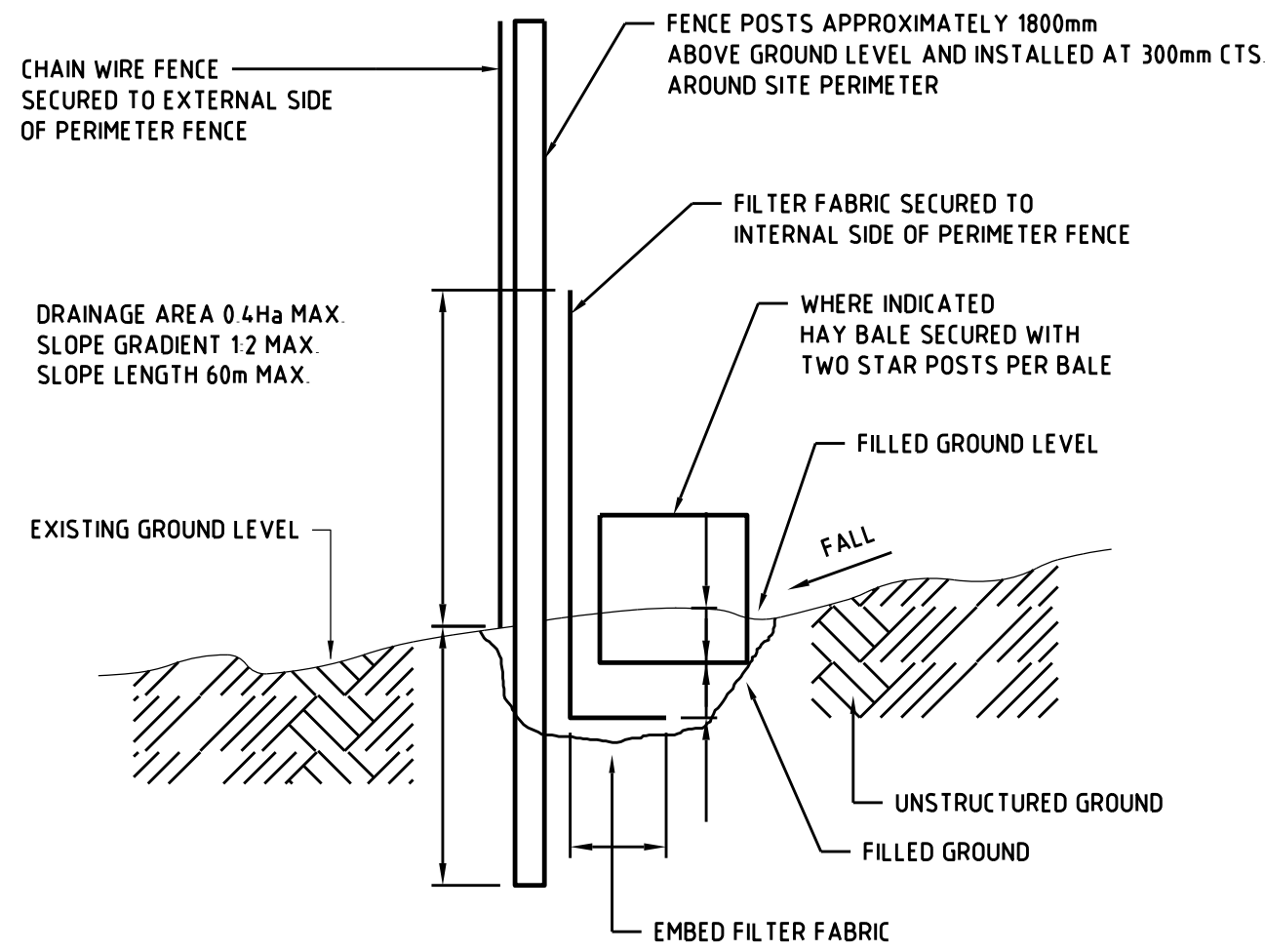
### STOCKPILES DETAIL

NOT TO SCALE



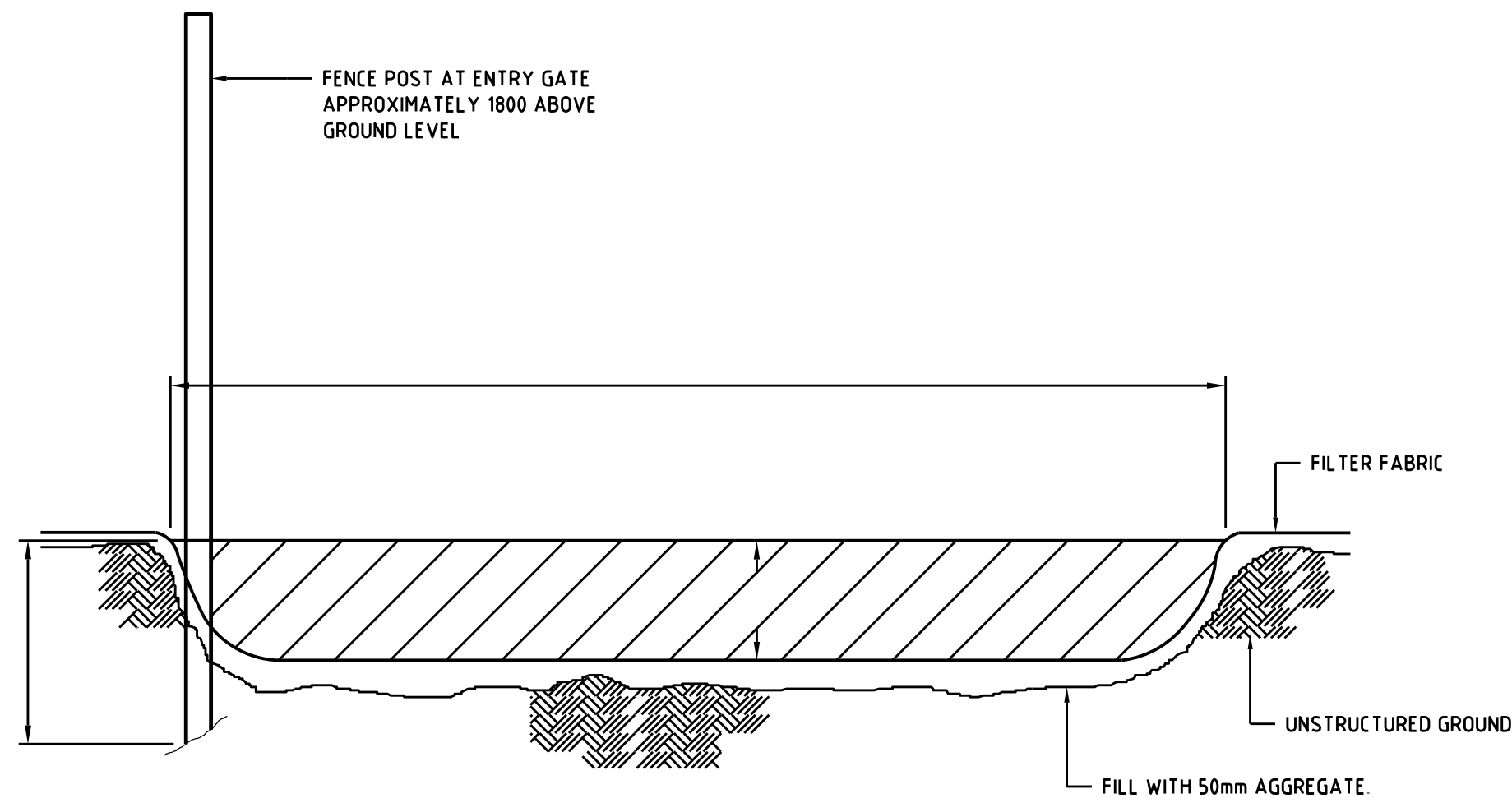
### GEOTEXTILE FILTER FABRIC DROP INLET SEDIMENT TRAP

NOT TO SCALE



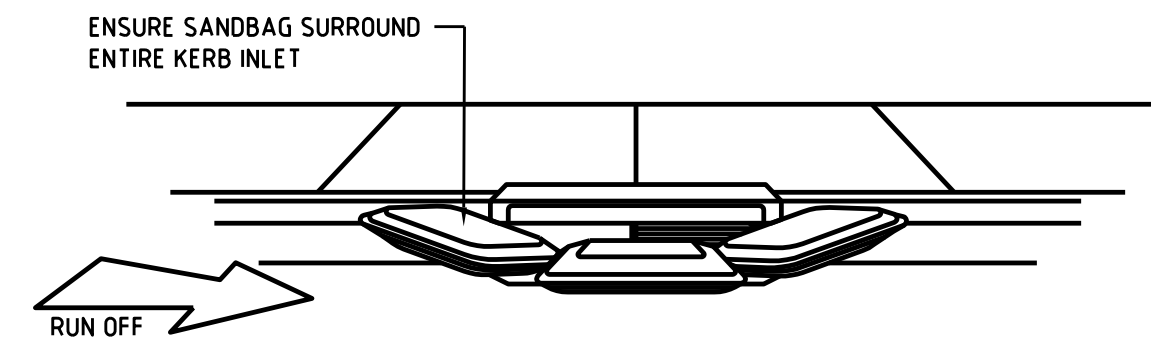
### HAY BALE BARRIER AND SILT FENCE DETAIL

NOT TO SCALE



### CROSS-SECTION OF CONSTRUCTION ENTRY/EXIT DETAIL

NOT TO SCALE



### SANDBAG KERB INLET SEDIMENT TRAP

N.T.S

DEVELOPMENT APPLICATION  
**249/2020**  
Randwick City Council  
4 June 2020  
Records Received

DA ISSUE  
NOT FOR CONSTRUCTION

DA1	DA SUBMISSION	27.04.20
ISSUE	DESCRIPTION	APPROVED DATE

ARCHITECT  
QOH ARCHITECTS  
QUINN O'HANLON ARCHITECTS PTY. LTD.  
1/153 VICTORIA ROAD, GLADESVILLE NSW 2111  
T: (02) 9420 3155 F: (02) 9240 3655  
W: www.qoh.net.au

**BIRZULIS ASSOCIATES**

CONSULTING STRUCTURAL & CIVIL ENGINEERS  
105 MEREWETHER STREET, MEREWETHER NSW 2291  
tel: (02) 4049 4855 email: pprogan@birzulissassociates.com  
www.birzulissassociates.com

PROJECT  
CHAMPAGNAT CATHOLIC COLLEGE  
BLOCK B - MAROUBRA NSW

TITLE  
EROSION AND SEDIMENT  
CONTROL DETAILS

SCALES as noted @A1 DATE FEB' 2020

DRAWN JSS DESIGN PG VERIFIED APPROVED

REPRODUCTION OF THIS DRAWING IS PROHIBITED  
WITHOUT THE CONSENT OF BIRZULIS ASSOCIATES PTY. LTD.

ISSUE	PROJECT No.	DRAWING No.
DA1	191001	ESC.2